

## Transform All Your Living Spaces with LumaTrax™



### ***A Beautiful Appearance***

Add cove, baseboard, or chair rail accent lighting to your interior that appears as attractive crown molding or baseboards.

### ***Fit Any Space***

LumaTrax™ Lighting Solutions are modular and expandable for any size room or space without expensive fabrication work.

### ***Lighting by Design***

LumaTrax™ Lighting Solutions ensure consistent white or colored accent lighting with no hot spots to ensure consistent lighting throughout any room.

### ***Easy to Install***

LumaTrax™ base and cover conceals the controller, cables and secures the lighting perfectly in place. Our LumaTrax™ Solutions use a plug-in power supply, so in most cases an electrician is not required for installation.

### ***Convenient Control***

LumaTrax™ Lighting Solutions Wireless Mesh Control allows for on, off, dimming, and color control from your smart phone anywhere in the house. With optional Smart Bridge, control via voice with Alexa or OK Google.



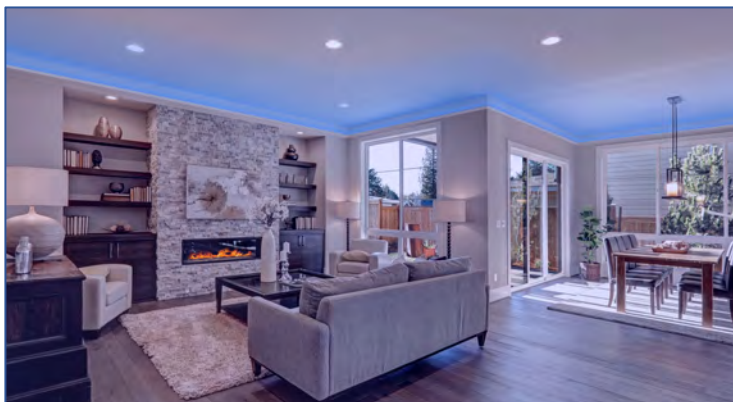
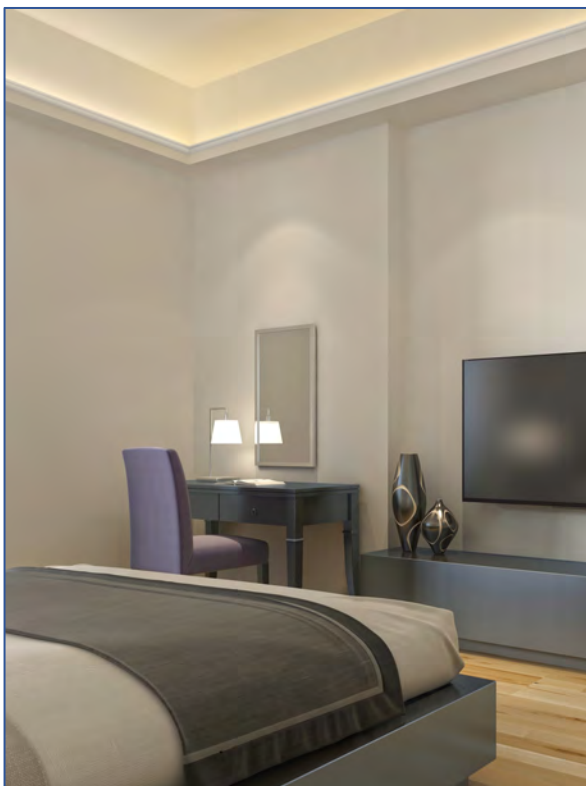
LumaTrax™ Lighting Solutions make adding lighting virtually anywhere not only possible, but easy.

### **Solutions Available**

- **16' Solution (Expandable to 32')**
- **Optional 16' Expansion Kit**
- **64' Solution**

[Specification Sheet](#)

[Installation Instructions](#)



## Solutions

### 16' Solution Part # LT-LK-IT-16

Base Part – 4' Sections	4
Cover Part – 4' Sections	5
Lens Part – 4' Sections	4
RGBW LED Lighting – 16'	1
Wireless Mesh Controller	1
RGBW Splitter	1
LED Strip to Strip Connect	1
60w 24V Power Supply	1
20' Power Extension	1

### 16' Add-On Kit Part # LT-IT-AO-16

Base Part – 4' Sections	4
Cover Part – 4' Sections	5
Lens Part – 4' Sections	4
RGBW LED Lighting – 16'	1
LED Strip to Strip Connect	1

### 64' Solution Part # LT-LK-IT-64

Base Part – 4' Sections	16
Cover Part – 4' Sections	18
Lens Part – 4' Sections	4
RGBW LED Lighting – 16'	4
Wireless Mesh Controller	1
RGBW Splitter	1
LED Strip to Strip Connect	2
96W 24V Power Supply	1
20' Power Extension	1